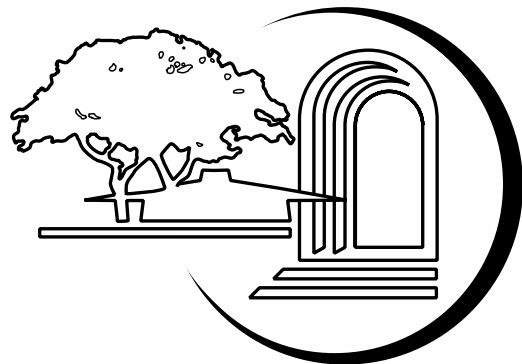




Shasta College

ACCCA Admin 101 – July 2021



**FOOTHILL-DE ANZA
Community College District**

A Single College District Perspective on Governance

- Quick History – participatory work at Shasta College, accreditation & more

<https://www.shastacollege.edu/about/leadership-organization/participatory-committees/>

Key Point – outlines
four broad, long-term
goals to guide the
District over a long
period of time



Shasta-Tehama-Trinity Joint
Community College District

Educational Master Plan 2012-2030

Shasta College (Main Campus)
11555 Old Oregon Trail
P.O. Box 496006
Redding, CA 96049-6006

Health Sciences and University Center
1400 Market Street
Redding, CA 96001

Intermountain Campus
37581 Mountain View Road
Burney, CA 96013

Tehama Campus
770 Diamond Avenue
Red Bluff, CA 96080

Trinity Campus
30 Arbuckle Court
Weaverville, CA 96093

Key ideas –
Outlines links from
planning to budgeting
Includes regular timelines
for annual planning and to
occasionally review/modify
processes



Shasta-Tehama-Trinity Joint
Community College District

Integrated Planning Manual



Shasta College
www.shastacollege.edu

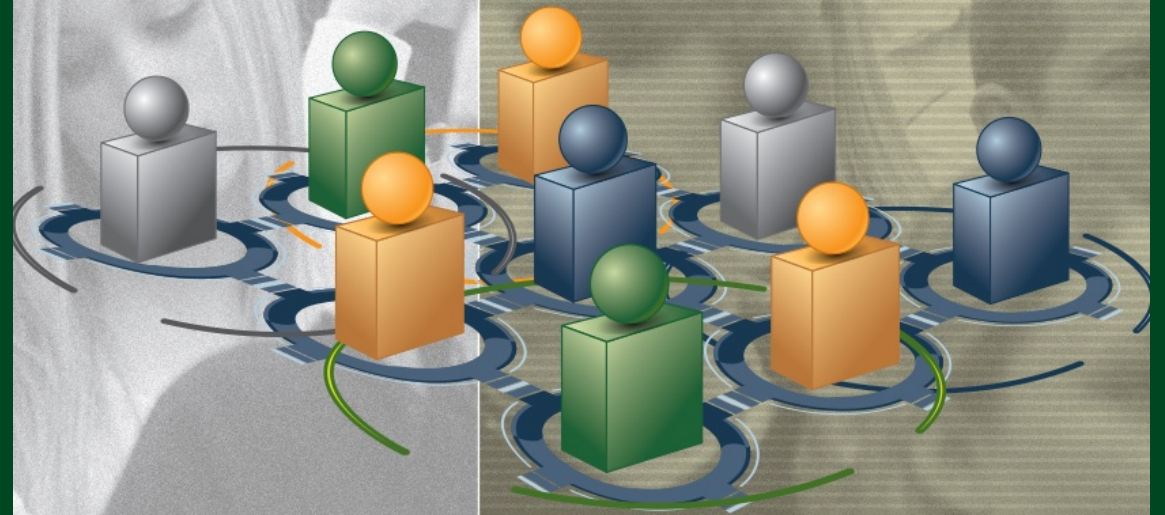
- This cycle is included in the Integrated Planning Manual. Key components include the Mission Statement informing the Educational Master Plan, which informs the three year Strategic Plan, which guides the Annual planning cycle



This manual defines the roles of various groups and committees in the participatory governance of the college. Defines Academic Senate and labor roles at beginning of document.

Shasta-Tehama-Trinity Joint
Community College District

Participatory Governance Manual



Strengths

1. Improved understanding of how ideas can get funded through annual planning processes
2. Strong link from mission to long-term goals to short term planning

Challenges

1. Continued orientation/education of new staff into processes
2. Ensuring student involvement
3. Integrating the many different planning documents
4. Communication of various committee discussions
5. Making participation meaningful

MULTI-COLLEGE Strengths

1. Expanded capacity for innovation and experimentation
2. District Office responsibility for many infrastructure functions
3. Less operational intrusion by Trustees

MULTI-COLLEGE Challenges

1. Agreement on policies and procedures
2. Pace of decision making
3. Communication

QUESTIONS/DISCUSSION