



# Vision 2030 in the current context

---

Our Time is Now!



**January 17, 2024**



**Sonya Christian  
Chancellor**

-  <https://www.cccco.edu/About-Us/Chancellors-Office/Meet-the-Chancellor>
-  [sonya.christian.96](#)
-  [@sonyachristian](#)
-  [sonya\\_christian](#)
-  [sonyachristianblog.com](#)  
[workforceandeconomicmobility.com](#)

# The Context & Vision 2030

State Revenue

Career Ed. Master Plan

Climate Priority

AI and AGI

Maximize SCFF

Workforce Development

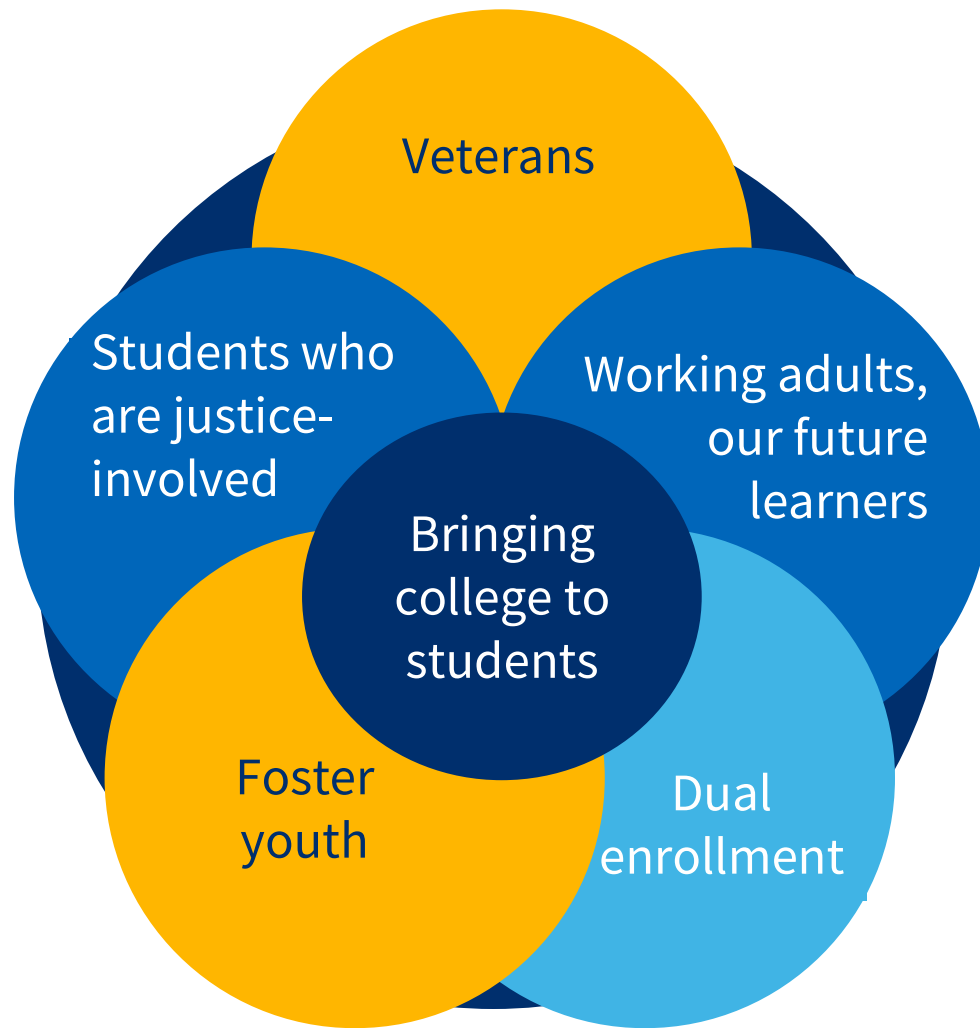
Intentional implementation of  
funding commitments

Climate Funding

Well organized clean data sets

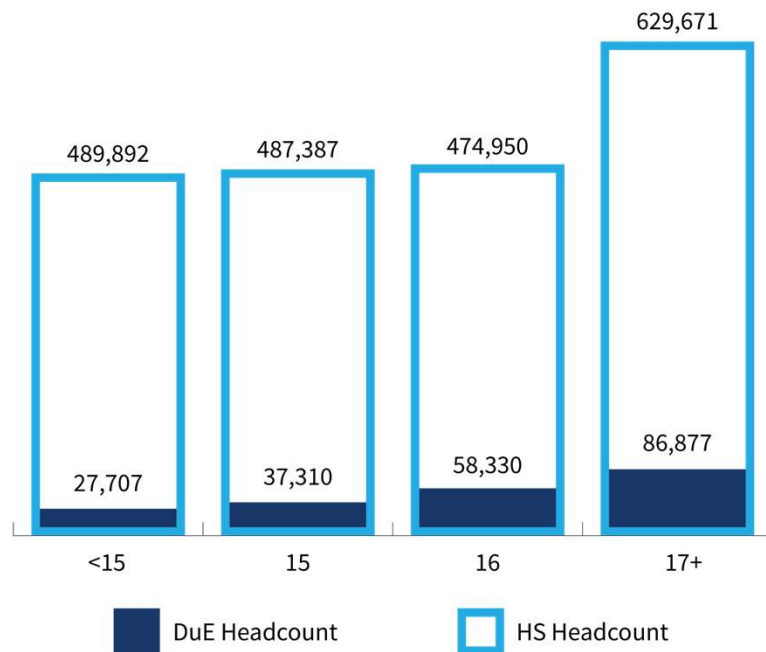
**Table 3: Proposed 2024-25 Student Centered Funding Formula Rates (rounded)**

<b>Allocations</b>	<b>2023-24 P1 Rates<sup>a</sup></b>	<b>Estimated Proposed 2024-25 Rates<sup>b</sup></b>	<b>Estimated Change from 2023-24 (Amount)</b>	<b>Estimated Change from 2023-24 (Percent)</b>
Base Credit <sup>a</sup>	\$5,238	\$5,278	\$40	0.76%
Incarcerated Credit <sup>a</sup>	7,346	7,402	56	0.76%
Special Admit Credit <sup>a</sup>	7,346	7,402	56	0.76%
CDCP	7,346	7,402	56	0.76%
Noncredit	4,417	4,451	34	0.76%
Supplemental Point Value	1,239	1,248	9	0.76%
Student Success Main Point Value	730	736	6	0.76%
Student Success Equity Point Value	184	186	1	0.76%

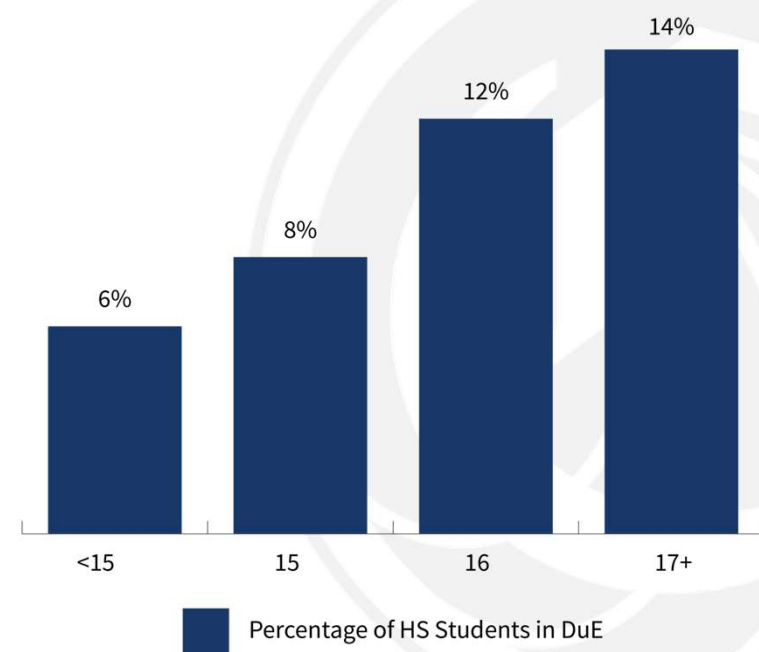


# DUAL ENROLLMENT OPPORTUNITY IS STRONG

California Dual Enrollment Participation  
by Student Age | 2021-2022



Percent of High School Students Participating in  
Dual Enrollment by Age | 2021-2022

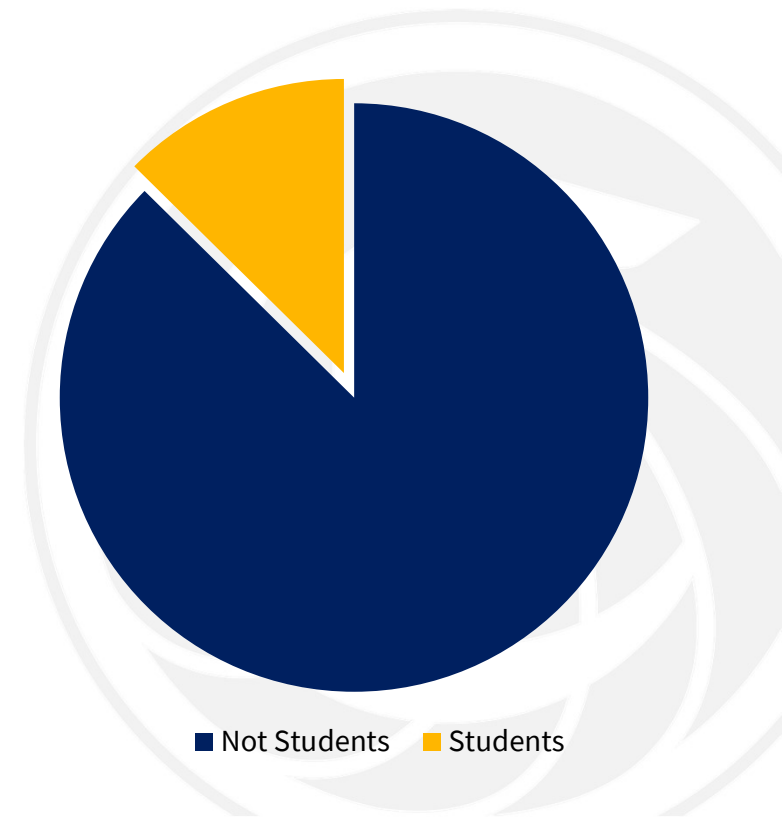


# PRISON POPULATION & ENROLLED STUDENTS

## Incarcerated Californians

For the Spring 2023 term, there were **13,506** incarcerated students enrolled at all California community colleges.

On Oct. 18, 2023, there were **93,644** prison inmates at California Department of Corrections and Rehabilitation's 32 prison institutions.



# A WORD ON VISION 2030 AND EQUITY IN SUPPORT

Pell, CCPG, 540

Social Safety Nets

Cal Grant Reform

# Vision 2030 - Strategic Directions + Budget Process

## Equitable Pathways to Baccalaureate Attainment

9<sup>th</sup> grade to  
baccalaureate  
attainment.

Dual Enrollment

ADT

CC Baccalaureate

## Equitable Workforce and Economic Development

Health care & Housing:  
\$60M in Nursing

Previous:  
Apprenticeships – CAI, AIF,  
Youth Apprenticeships,  
ELL Healthcare Pathways  
initiative

Labor Agency: H RTP

Additional:  
Apprenticeship  
infrastructure for CAI  
Credit for Prior Learning

Climate:  
Microgrids  
Workforce (eg: EV)

## Generative AI and the Future of Teaching and Learning

Data – clean &  
organized

E-transcripts -  
Cradle to Career





# Vision 2030 in the current context

---

Our Time is Now!



**January 17, 2024**



**Sonya Christian  
Chancellor**

-  <https://www.cccco.edu/About-Us/Chancellors-Office/Meet-the-Chancellor>
-  [sonya.christian.96](#)
-  [@sonyachristian](#)
-  [sonya\\_christian](#)
-  [sonyachristianblog.com](#)  
[workforceandeconomicmobility.com](#)